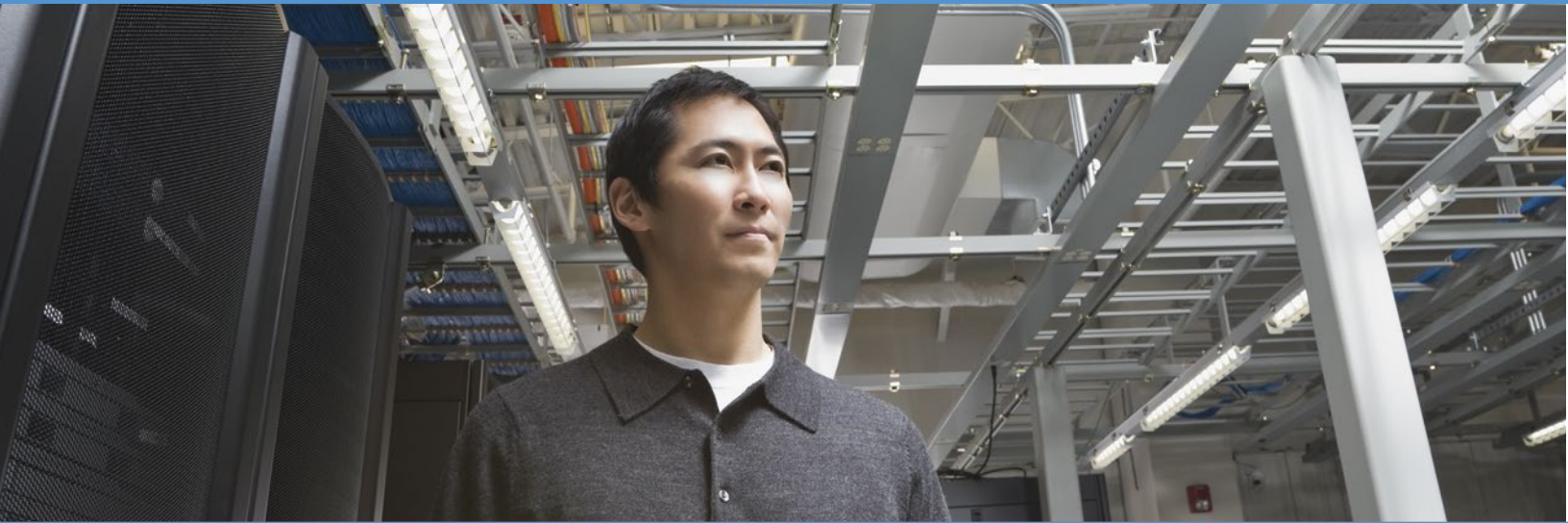


Better Server Management Starts With Smarter Server Management.



Solutions that help your customers work more efficiently in and out of the data center.

No two data centers are alike. That's why Raritan offers a full range of KVM switches that help your customers better manage their devices at the rack, across town or half a world away.

Our solutions include:

- ▶ Award-winning KVM-over-IP switches that support 1–8 IP users and up to 64 ports
- ▶ 8- or 16-port rack-mount Analog KVM switches that can control up to 4096 servers
- ▶ Serial Console Servers
- ▶ 17" and 19" TFT display, rack-mount LCD console drawers and switches
- ▶ 2-year factory warranties
- ▶ Raritan technical and sales support

Server Room/Data Center Products

Dominion® KX III

Next generation, multi-user KVM-over-IP switches with BIOS-level control



- ▶ VGA, DVI, HDMI and DisplayPort video from a single switch
- ▶ 1 to 8 IP users, 1 local user and support for 8 to 64 servers
- ▶ Virtual Media, dual LAN and dual power with failover standard on all models
- ▶ 1920x1080 HD analog & digital video, with up to 30 FPS HD video with audio
- ▶ Absolute Mouse Synchronization™ for perfect mouse synchronization
- ▶ Secure appliance with AES encryption, FIPS support, and smart card support
- ▶ Supports PS/2®, USB and Sun™ USB enabled servers and Serial devices
- ▶ Remote power reboot capability if you connect a Raritan PDU

For central management of multiple KX units use CommandCenter Secure Gateway, a physical or virtual appliance for a secure and single point of remote access and control.

Dominion KX III Model	Description
DKX3-108	8-port KVM-over-IP switch, 1 remote user, 1 local user, virtual media, dual power
DKX3-116	16-port KVM-over-IP switch, 1 remote user, 1 local user, virtual media, dual power
DKX3-132	32-port KVM-over-IP switch, 1 remote user, 1 local user, virtual media, dual power
DKX3-216	16-port KVM-over-IP switch, 2 remote users, 1 local user, virtual media, dual power
DKX3-232	32-port KVM-over-IP switch, 2 remote users, 1 local user, virtual media, dual power
DKX3-416	16-port KVM-over-IP switch, 4 remote users, 1 local user, virtual media, dual power
DKX3-432	32-port KVM-over-IP switch, 4 remote users, 1 local user, virtual media, dual power
DKX3-464	64-port KVM-over-IP switch, 4 remote users, 1 local user, virtual media, dual power
DKX3-808	8-port KVM-over-IP switch, 8 remote users, 1 local user + 1 extended local port, virtual media, dual power
DKX3-832	32-port KVM-over-IP switch, 8 remote users, 1 local user + 1 extended local port, virtual media, dual power
DKX3-864	64-port KVM-over-IP switch, 8 remote users, 1 local user + 1 extended local port, virtual media, dual power
D2CIM-DVUSB	Enhanced USB CIM required for virtual media (BIOS access), Absolute Mouse Synchronization and smart card/CAC use
DCIM-PS2	CIM for PS/2 keyboard and mouse
D2CIM-DVUSB-DVI	Dual USB, DVI-D CIM for BIOS virtual media and advanced features
D2CIM-DVUSB-HDMI	Dual USB, HDMI CIM for BIOS virtual media and advanced features
D2CIM-DVUSB-DP	Dual USB, DisplayPort CIM for BIOS virtual media and advanced features

LCD Consoles and Switches

Rack-mount LCD console drawers and LCD KVM switches



- ▶ 17" or 19" LCD display
- ▶ 19" supports 1280x1024 VGA resolution & 17" T1700-LED supports 1920x1080 VGA or DVI
- ▶ TMCAT models include a built-in 8- or 16-port Cat5 KVM switch
- ▶ Optional user station allows a second user to be located 150 feet away from the KVM switch
- ▶ Supports PS/2, USB and Sun USB enabled servers

LCD Consoles and Switches	Description
T1700-LED	17" LED Back-light, LCD KVM Console, LCD panel, keyboard, touchpad, 1U rack mount form factor
T1900	19" LCD KVM console, LCD panel, keyboard, touchpad, 1280x1024 resolution, 1U rack mount form factor
TMCAT1728	17" LCD KVM console with built-in 8-port Analog Cat5 KVM switch
TMCAT17216	17" LCD KVM console with built-in 16-port Analog Cat5 KVM switch

MasterConsole® CAT

8- or 16-port rack-mount Analog Cat5 KVM switches that can control up to 256 servers



- ▶ 1U rack-mountable case
- ▶ MCCAT 2-user model allows a second user to be located 150 feet away from KVM switch
- ▶ Enables server switching via port selection buttons or on-screen user interface
- ▶ Supports PS/2, USB and Sun USB enabled servers

Master Console CAT Model	Description
MCCAT18	8-port, 1-user MasterConsole Analog CAT5 KVM switch
MCCAT116	16-port, 1-user MasterConsole Analog CAT5 KVM switch
MCCAT28-UST	8-port, 2-user MasterConsole Analog CAT5 KVM switch (includes 2nd user station)
MCCAT216-UST	16-port, 2-user MasterConsole Analog CAT5 KVM switch (includes 2nd user station)
MCIM-PS2	CIM for PS/2 ports
MCIM-USB	CIM for USB ports

Dominion LX

Cost-effective KVM over IP for SMB



- ▶ Local and remote BIOS-level access and control of up to 16 servers
- ▶ Install OS and software from anywhere using Universal Virtual Media™
- ▶ Modern architecture platform supports High Definition (HD) 1920x1080 remote video resolution
- ▶ Efficient reliable server management through a common and modern browser-based GUI
- ▶ Single switch to support VGA, DVI, HDMI, and DisplayPort server video

Dominion LX Model	Description
DLX-108	SMB 8-Port KVM over IP Switch, 1 remote User, 1 Local User, Virtual Media
DLX-116	SMB 16-Port KVM over IP Switch, 1 remote User, 1 Local User, Virtual Media
DLX-216	SMB 16-Port KVM over IP Switch, 2 remote Users, 1 Local User, Virtual Media
D2CIM-VUSB	USB CIM required for Absolute Mouse Synch and Virtual Media
D2CIM-DVUSB-DVI	Dual USB, DVI-D CIM for BIOS virtual media and advanced features
D2CIM-DVUSB-HDMI	Dual USB, HDMI CIM for BIOS virtual media and advanced features
D2CIM-DVUSB-DP	Dual USB, DisplayPort CIM for BIOS virtual media and advanced feature
MCUTP20-USB	Integrated UTP cables for USB ports, 6.5 feet
MCUTP40-USB	Integrated UTP cables for USB ports, 13 feet
MCUTP20-PS2	Integrated UTP cables for PS2 ports, 6.5 feet
MCUTP40-PS2	Integrated UTP cables for PS2 ports, 13 feet

Cat5 Reach DVI

Cat5 Reach DVI transmitter, receiver, power supplies, adapters and cables



- ▶ 500 feet distance, up to 3,000 feet with daisy chaining
- ▶ Up to 1920x1080 (1080p) DVI and VGA video resolution
- ▶ USB keyboard/mouse, audio and IR control
- ▶ Remote and local consoles

Part Number	Description
C5R-DVI	Cat5 transmitter and receiver pair

expreZo EZswitch

Low cost 8- & 16-port analog coax KVM Switches



- ▶ Supports PS/2, and USB enabled servers
- ▶ Supports VGA resolution up to 2048 x 1536
- ▶ 4-in-1 cable for quick and easy connection (VGA, USB and PS/2 on one cable)
- ▶ Three levels of cascading, up to 4,096 servers

expreZo EZswitch Model	Description
EZ-108	8-port expreZo KVM switch with eight 1.8 M Cables
EZ-116	16-port expreZo KVM switch with eight 1.8 M Cables

Dominion SX

Serial console switch



- ▶ Wide selection of models available — 4, 8, 16, 32 or 48 Ports
- ▶ Local and remote access and control of serial servers and other serial IT devices, via SSH/Telnet and Web browser
- ▶ Securely encrypts all communications via 128-bit SSL with RC4 encryption or AES/3DES with SSHv2
- ▶ Models with dual power supplies, built-in modem and redundant LAN interface available
- ▶ Optional integration with CommandCenter Secure Gateway and Raritan Power Control Units

Dominion SX Model	Description
DSX4	Single-feed AC power 4-port secure console server with 2 console ports
DSXB-4-M	Single-feed AC power 4-port secure console server includes internal modem and 1 console port
DSX8	Single-feed AC power 8-port secure console server with 2 console ports
DSXA-8	Dual-feed AC power 8-port secure console server includes internal modem and 1 console port
DSXB-8-M	Single-feed AC power 8-port secure console server includes internal modem and 1 console port
DSXA-16	Dual-feed AC power 16-port secure console server includes internal modem, 1 console port
DSXA-16-DL	Dual-feed AC power, dual-Ethernet, 16-port secure console server, with two local access ports
DSXA-16-DLM	Dual-feed AC power, dual-Ethernet, 16-port secure console server, with one local access port, a built-in modem
DSXA-32	Dual-feed AC power 32-port secure console server includes internal modem, 1 console port
DSXA-32-AC	Dual-feed AC power 32-port secure console server with 2 console ports
DSXA-32-DL	Dual-feed AC power, dual-Ethernet, 32-port secure console server, with two local access ports
DSXA-32-DLM	Dual-feed AC power, dual-Ethernet, 32-port secure console server, with one local access port, a built-in mode
DSXA-48	Dual-feed AC power, dual-Ethernet 48-port secure console server includes internal modem, 1 console port
DSXA-48-AC	Dual-feed AC power, dual-Ethernet, 48-port secure console server with 2 console ports

Why Partner with Raritan

Raritan Deal Registration Program

Available for deals over \$10,000 (MSRP) in the U.S. and over \$5,000 (MSRP) in Canada and Latin America.

Raritan Trade-In Program

Ask your Raritan Channel Sales Representative about Raritan's trade-in program; get rebates for your customers' old KVM switches.

For more information, call 800.724.8090,
email channelhelp@raritan.com or visit www.raritan.com

© 2014 Raritan Inc. All rights reserved. Raritan®, Know more. Manage smarter.™, Dominion®, CommandCenter®, Paragon®, MasterConsole®, Switchman®, Virtual KVM Desktop™, Universal Virtual Media™ and Absolute Mouse Synchronization™ are registered trademarks or trademarks of Raritan Inc. or its wholly-owned subsidiaries. All others are registered trademarks or trademarks of their respective owners.